

Fortin Sugar  
Cabane  
Established  
2023

<https://accordingtojean.blog>

# Summary

- Startup \$43,000
  - Cost of Tools = \$2500
  - Building Cost = \$15,300
  - Equipment Cost = \$24750
    - Arch / Evaporator = \$13,700
    - 2 Holding Tanks = \$3650
    - Mainline = \$2500
    - Tubing = \$2400 (40 rolls, tees, spouts)
    - Vacuum Pump = \$2500
- Target Spring 2025 Season



**787 Gallon CDL Stainless Storage Tank  
(4'Wx8'Lx4'H)**

Item#: TD855  
\$1,825.00

787 Gallon CDL Stainless Storage Tank (4'Wx8'Lx4'H)

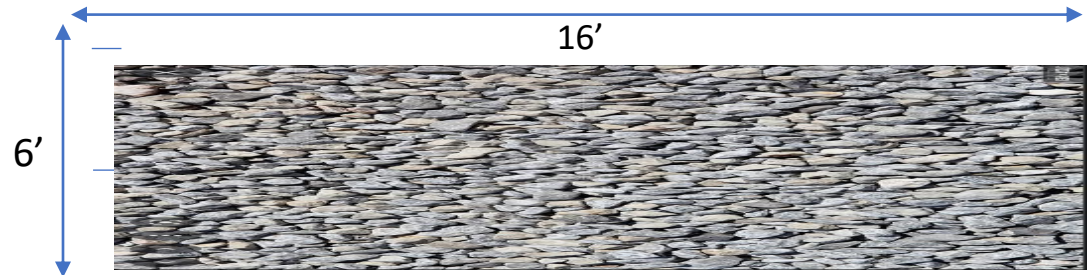


**1"x500' Roll of Leader Blue  
Mainline**

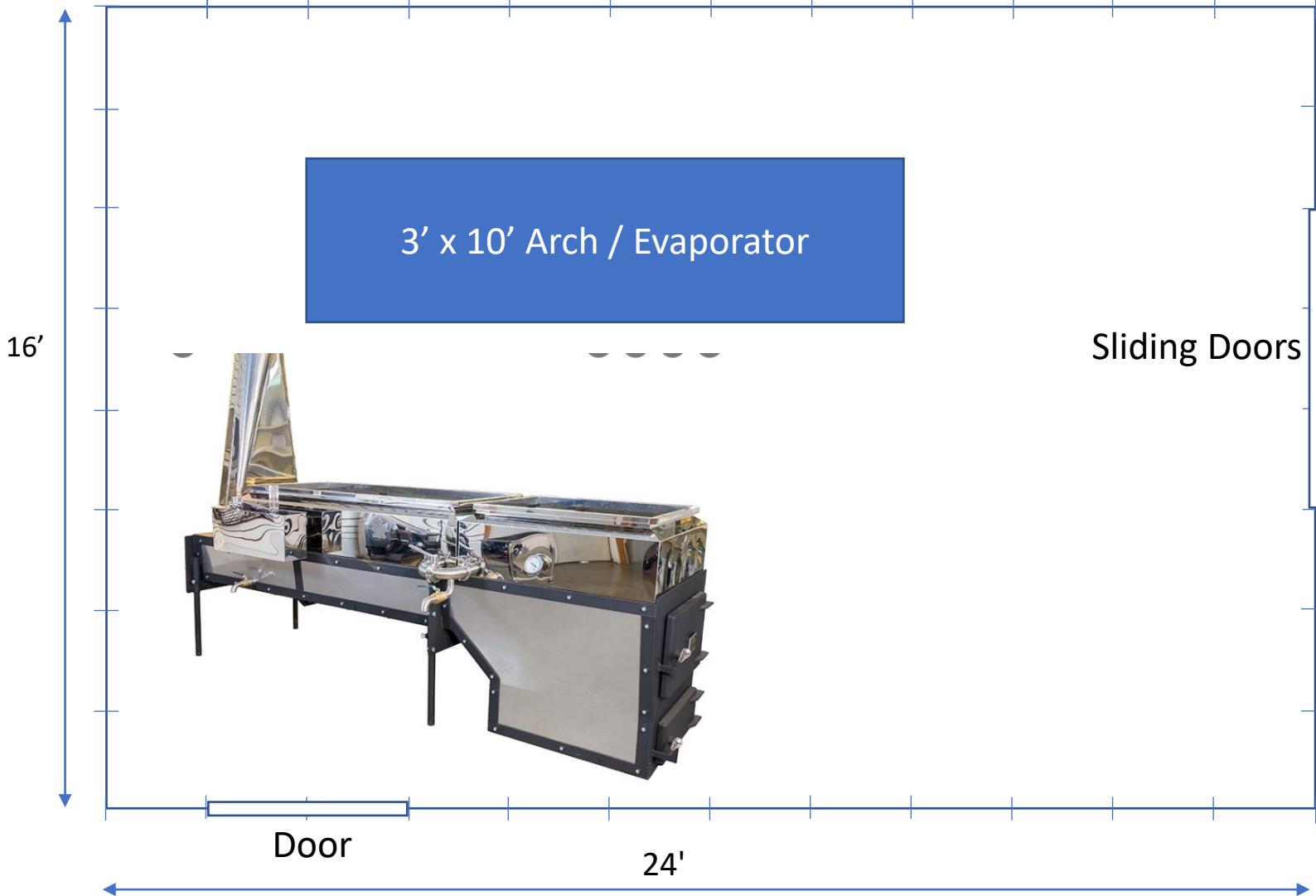
\$244.00

Freighted Item. Call for Freight Quote.

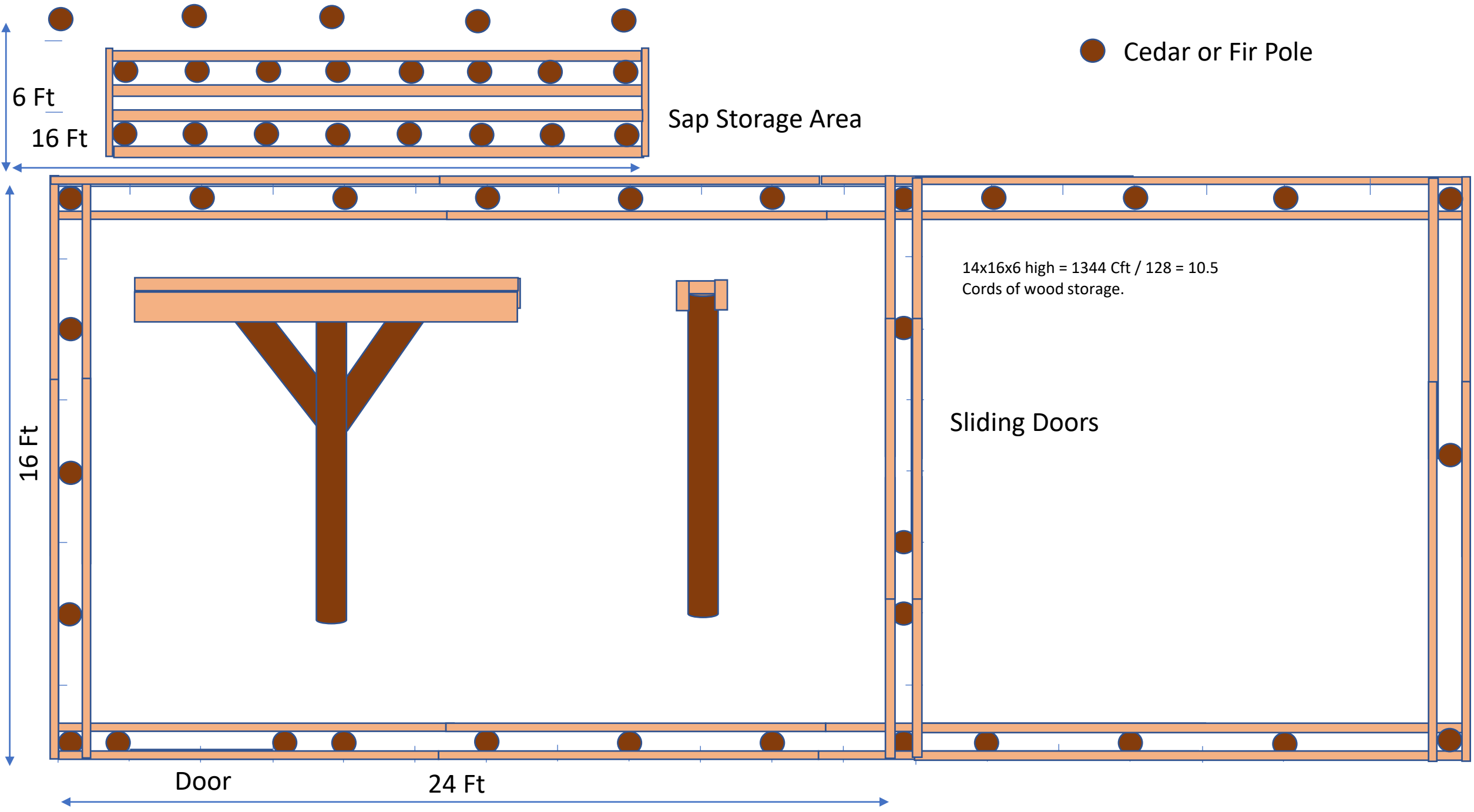




3' x 10' Arch / Evaporator







● Cedar or Fir Pole

6 Ft

16 Ft

Sap Storage Area

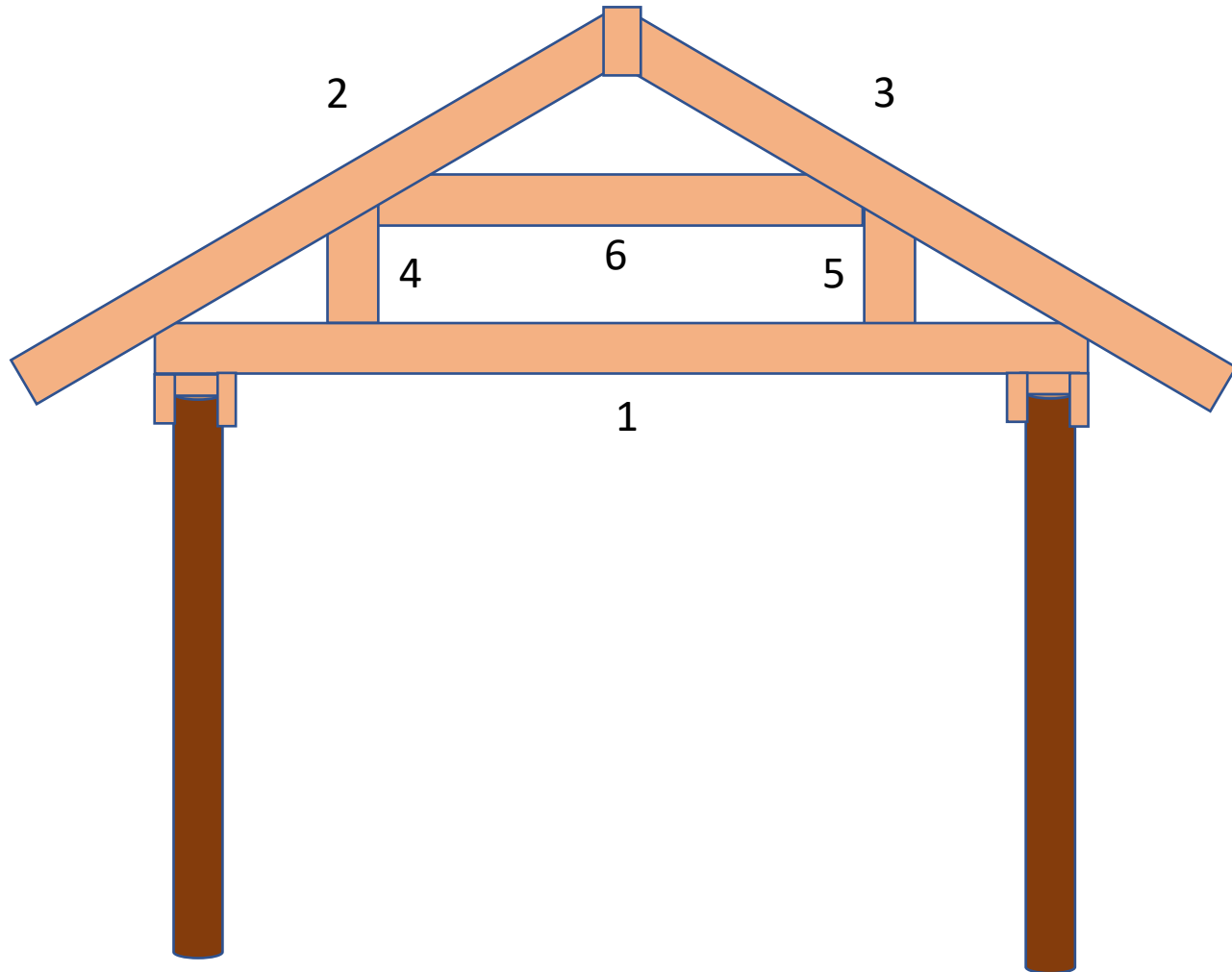
16 Ft

Door

24 Ft

14x16x6 high = 1344 Cft / 128 = 10.5  
Cords of wood storage.

Sliding Doors



## Rafters

- (1) 20 – 2x10x16 = Main Cross Piece
- (2,3) 40 -- 2x8x12 = Slope 30 Degrees
- (4,5) 38 -- 2x8x2
- (6) 20 – 2x8x8
- 50 -- 1x6x8 Boards for joints



8' Cedar or Fir Pole

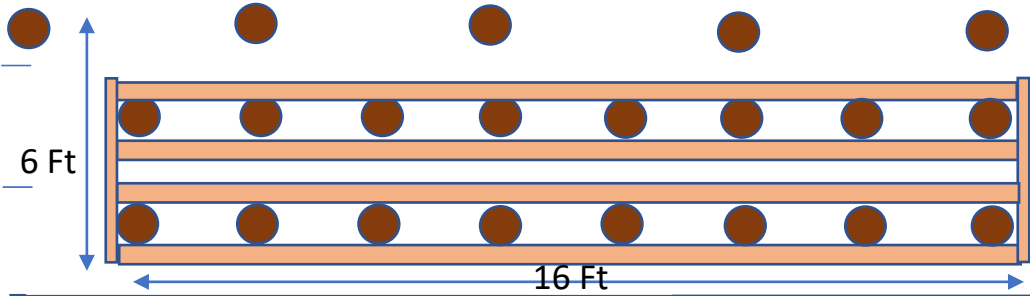
Customers Also



12 ft. Galvanized Steel Roof Panel

★★★★★ (311)

\$29<sup>98</sup>



### Roof Strapping

64, 2x4x8 = \$4x60=\$240

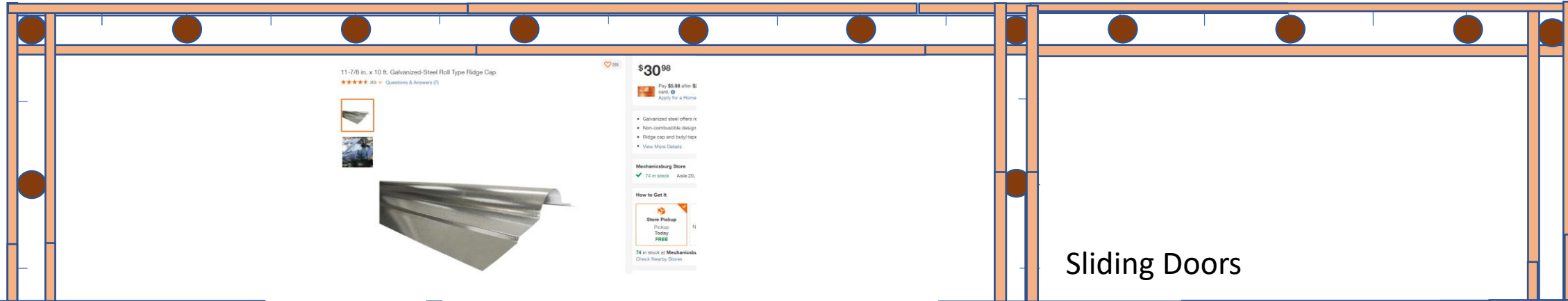
33'x12' roofing = \$35x32 = \$1120

9, 2'x10' roofing = \$35x6=\$210 (on side with sap tank)

Ridge cap 4, 10' = \$35x4= \$140

\$1700 Est \$1850

14 Ft



11-7/8 in. x 10 ft. Galvanized-Steel Roll Type Ridge Cap

★★★★★ (88) Questions & Answers (7)

\$30<sup>98</sup>

Pay \$5.88 when you use a card. Apply for a Home

- Galvanized steel offers a
- Non-combustible design
- Ridge cap and budy tape
- View More Details

Mechanixburg Store

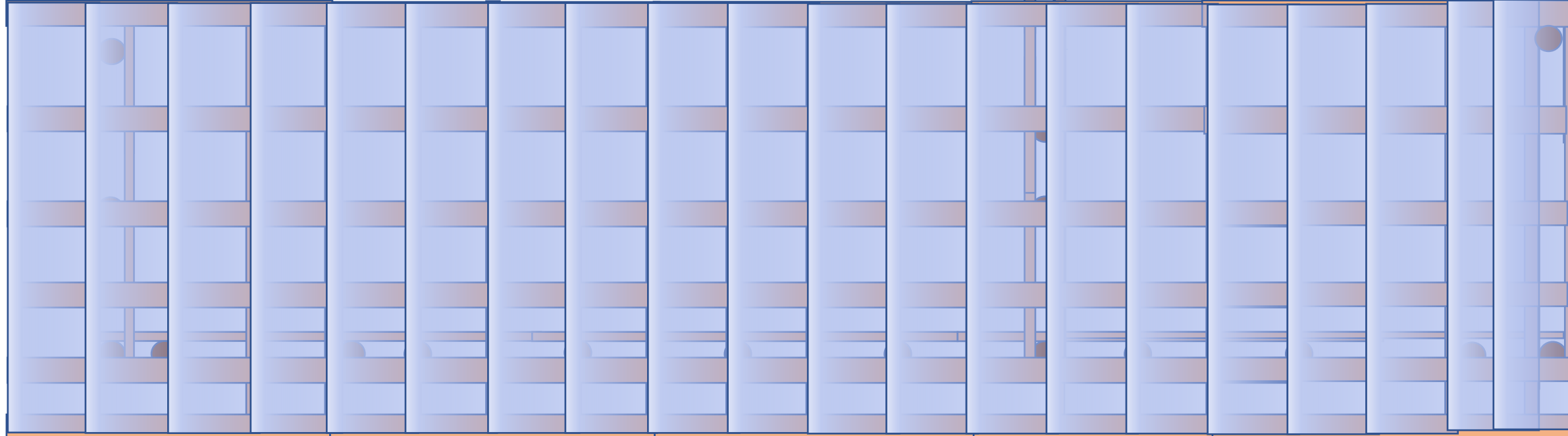
74 in stock Aisle 20,

How to Get It

Store Pickup

Pickup Today FREE

74 in stock at Mechanixburg Check Nearby Stores





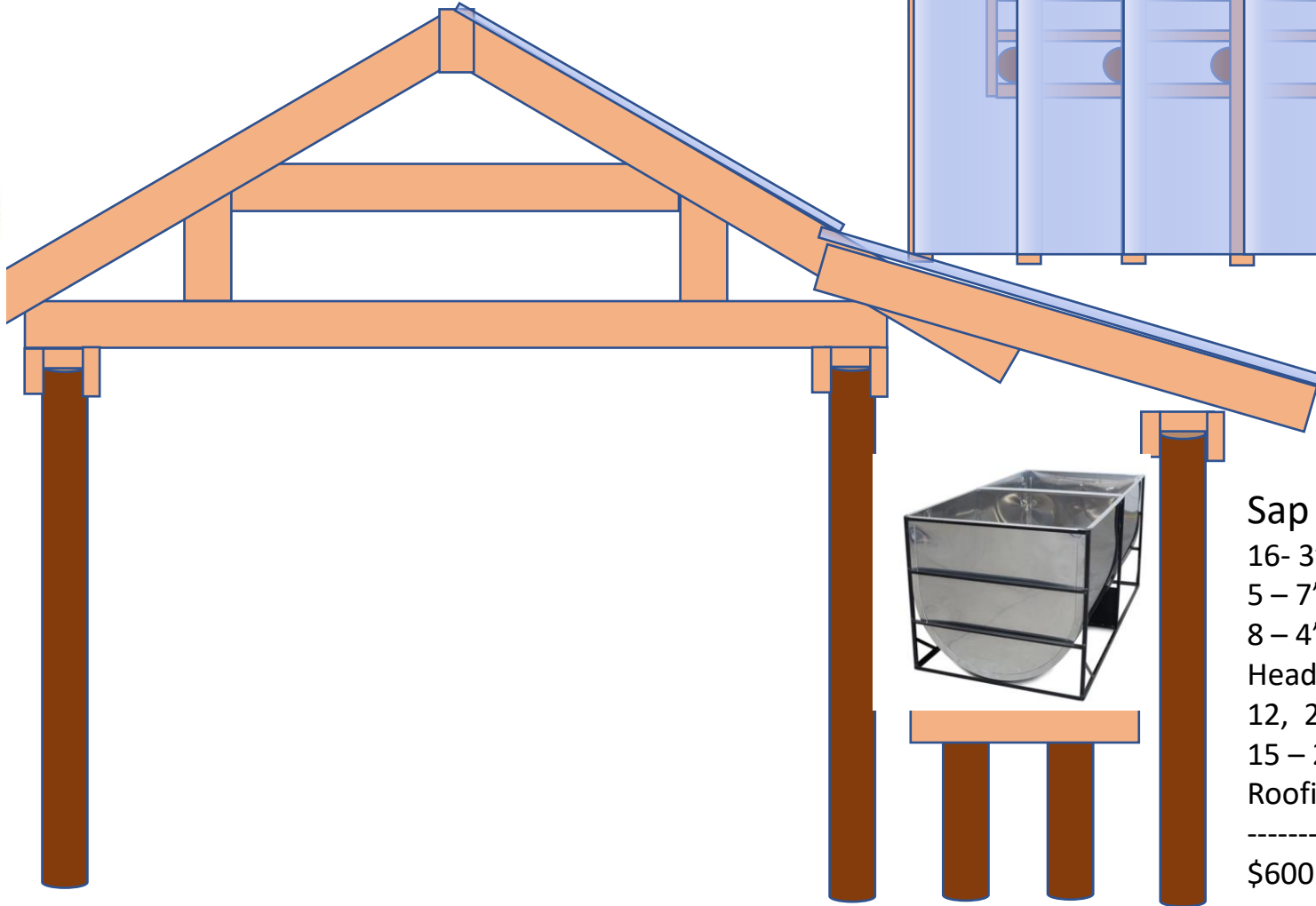
# Customers Also



12 ft. Galvanized Steel Roof Panel

★★★★☆ (311)

\$29<sup>98</sup>



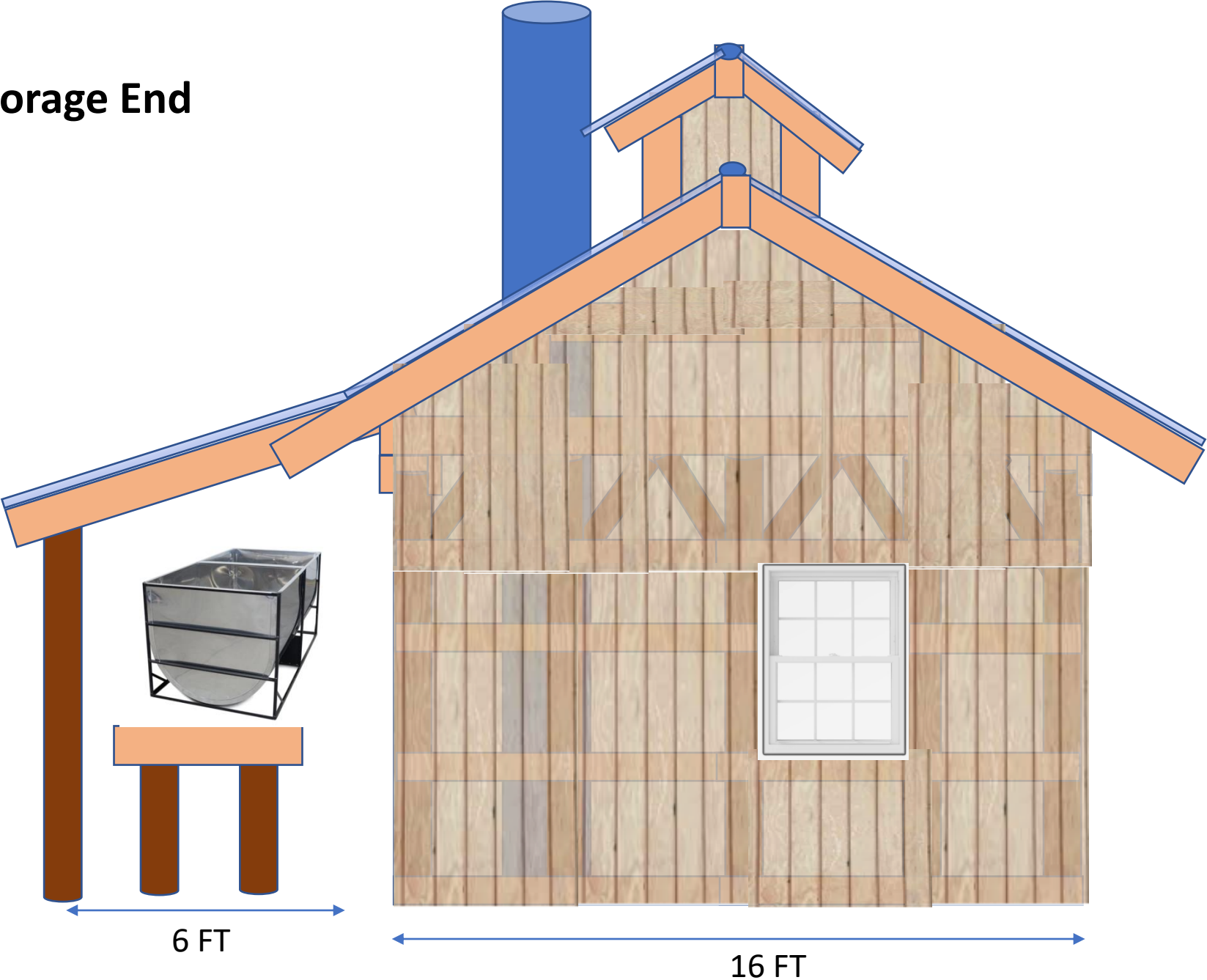
## Sap Tank Storage Area

- 16- 3' Cedar Post With Small End 5"
- 5 - 7' Cedar Post
- 8 - 4' Cedar Post for support
- Header - 4 - 2x8x12 = \$30X 3 = \$90
- 12, 2x4x8 (Roofing Strapping= \$4x10=\$40
- 15 - 2x8x10 = \$20X13 = \$260
- Roofing = 8 - 2X10 = \$35x6=\$210

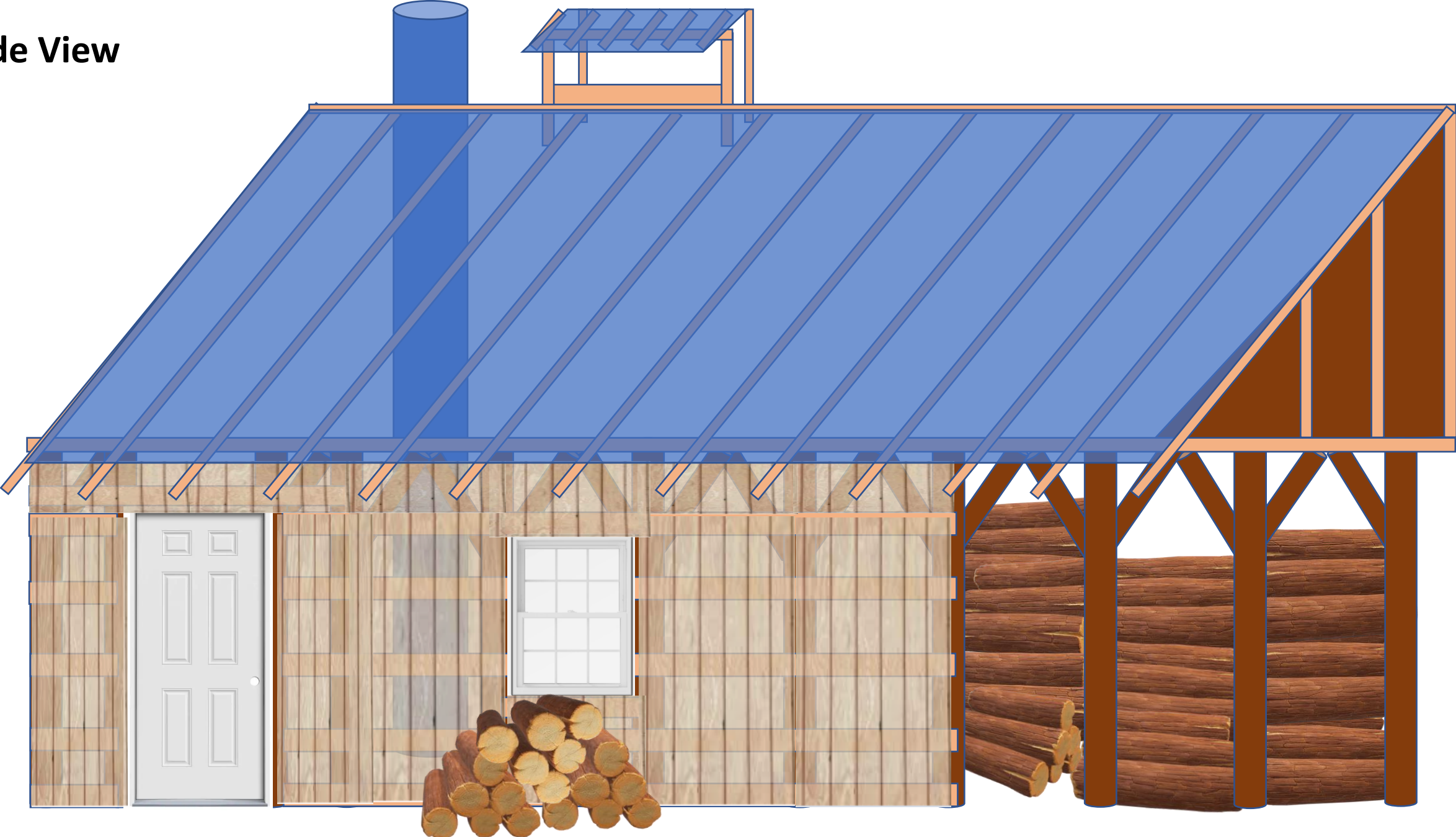
-----  
\$600 Est \$750

6 FT

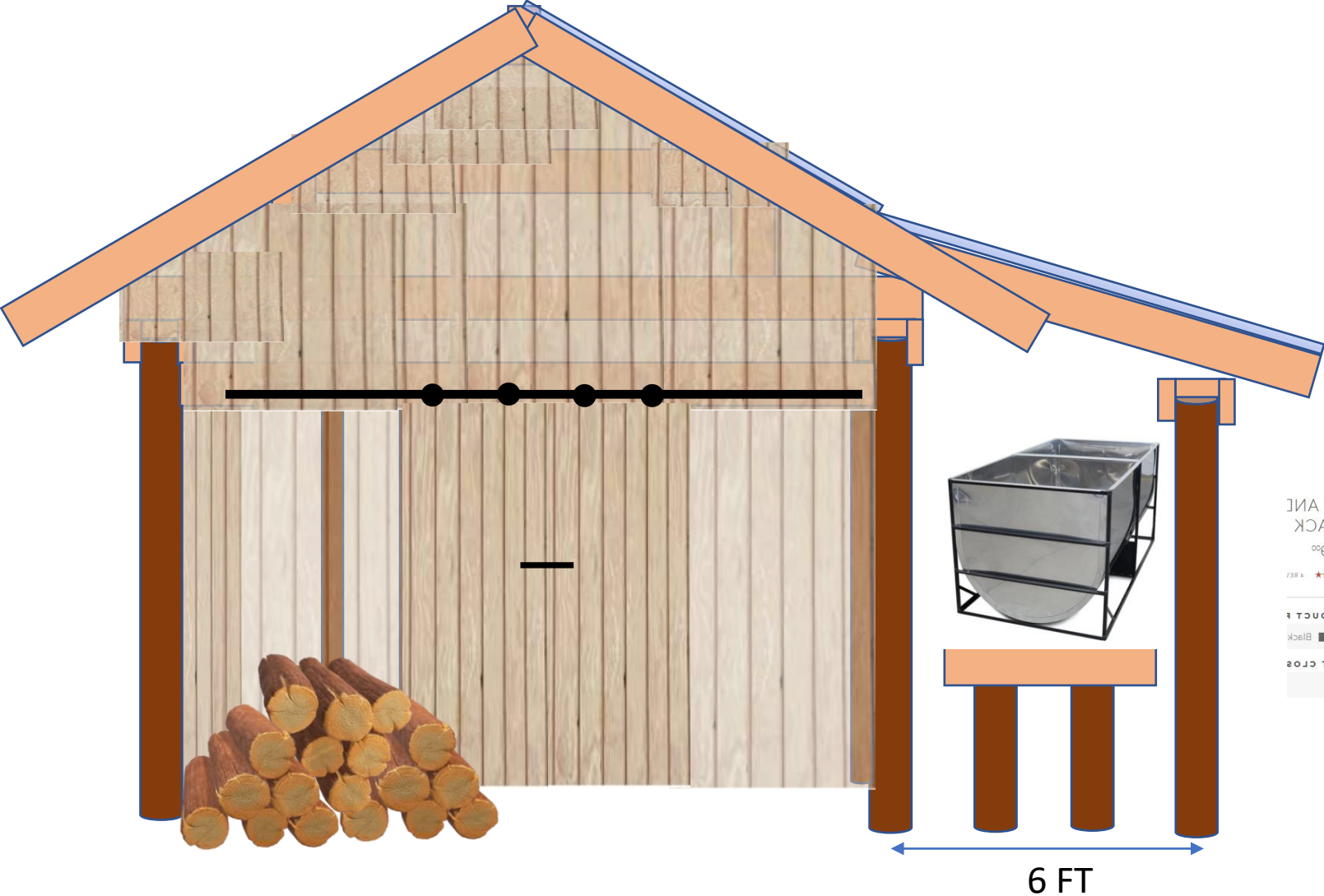
**SAP Storage End View**



Side View



# Woodshed End



78" ANI  
BLACK  
\$1390  
★★★★★  
PRODUCT  
Black  
SOFT CLOS  
No



# Materials

## Lumber

2x6x10 = 10  
2x8x10 = 57  
2x10x8 = 10  
2x10x12 = 1  
2x10x16 = 22  
2x8x8 = 26  
2x8x12 = 42  
2x4x8 = 150  
1x6x8 = 60

## Siding

T111 4x8 = 30

## Windows

3 (Size)

## Doors

1 Door 36X90  
2 Doors 3x8 (Rolling)

## Cedar Post

8' = 38  
4' = 68  
3' = 18

## Pressure Treated

2x6x10 = 8 For Sil

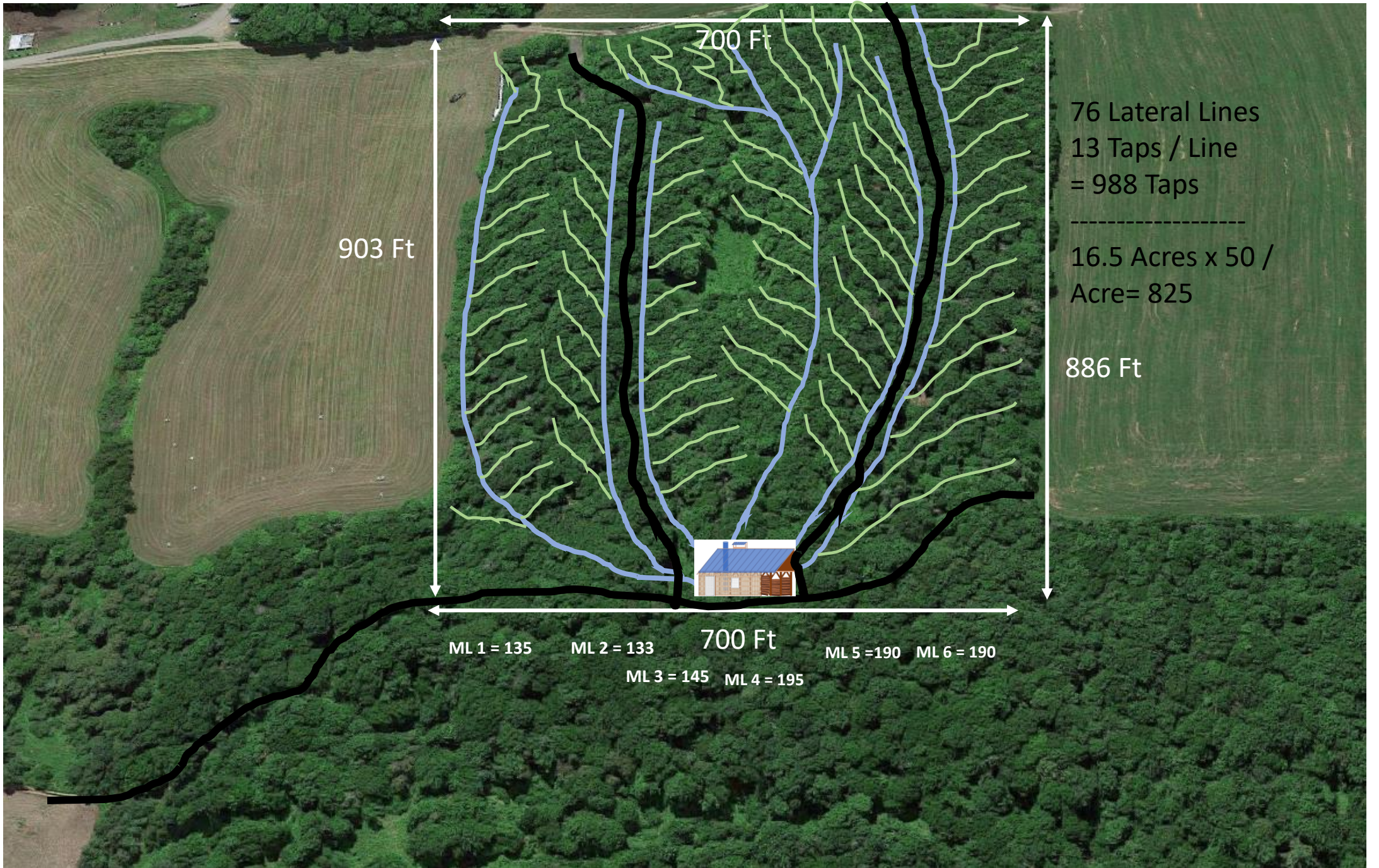
## Roofing

2x10 = 9  
2x12 = 34

## Tubing

6000' Mainline  
1" (or ¾?)

1000 drops  
1000 Ts



# Tubing, Drops, Mainlines

- In the Sugarbush
- Buckets, Bags, and Spouts
- Tubing Systems
- Spouts, Spiles, and Taps
- 3/16" Tubing and Fittings
- 5/16" Tubing and Fittings
- Mainline Tubing and Fittings
- Tubing Tools
- Tapping Hammers
- Storage Tanks and Parts
- Wire and Fencing Supplies
- Vacuum Systems



## Leader Clear Check Valve Spouts - 5/16"

Now: \$0.45

★★★★★ [Write a Review](#) (No reviews yet)

SKU: 4712R

\* Color: Red

Quantity: 1

[ADD TO CART](#)



[FIND A DEALER NEAR YOU](#)

Our MAPLEFLEX® mainlines are made to work at the highest vacuum levels. Above 28

BLUE OR GREEN MAPLEFLEX® MAINLINE

Brookfield Maple Products

**Mapleflex Mainline (make selection)**

\$43.54\* · Out of stock · Brand: Lapierre USA

Price is per 100' Our MAPLEFLEX® mainlines are made to work at the highest vacuum levels. Above 28 in/Hg. high vacuum allows for higher sap yields. ...

\* Check website for latest pricing and availability. Images may be subject to copyright. [Learn More](#)

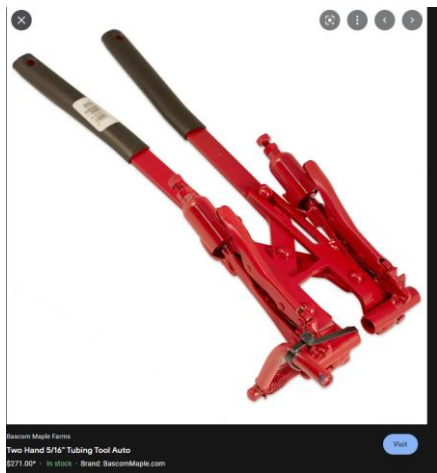
**Related Images**

Black main line - H2O Innovation Érablière

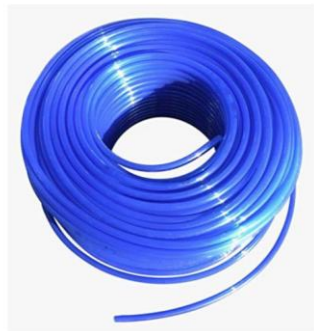
Fast! Lapierre touting new mainline Flex... themaplenews.com

Tubing tool

40 Rolls



Home > Maple Syrup Tree Tapping Tubing | 500 Foot Coil, 5/16" Dropline Connection | Food Grade, BPA-Free, Reusable



## Maple Syrup Tree Tapping Tubing | 500 Foot Coil, 5/16" Dropline Connection | Food Grade, BPA-Free, Reusable

by Maple Tapper

☆☆☆☆☆ No reviews

\$99.99 USD

Make sap collection faster and more efficient! Connect each tapline to one main line with this **500 feet of continuous 5/16" tubing**. You can cut to length and connect to each individual line or leave in one run to your main sap tank. Dark blue for easy visibility in the snow but still protects sap from sunlight.

- **5/16 inch Maple Tapping Line.** For use with vacuum set-up or cut to length for drop lines
- **Heavy Duty, Semi-Stiff, Food Grade, BPA Free.** Rated for use for 15 Years.
- **High Visibility.** Draws less sunlight, yet still shows flow of sap
- **Washable & Reusable**
- **Connects with splitters or 5/16" Tree Saver Spiles** (sold separately).
- **Maple Tapper Guarantee** on all equipment



1" x 500' Roll of Leader Blue Mainline

\$244.00

Freighted Item. Call for Freight Quote.

1200 Drops

Maple Supplies - Hobby - 5/16" Supplies - 5/16" Black Health T with Cup

What are you looking for?

- 12 oz Plastic Flat Bottle
- 3/16" Fittings
- 3/16" Tools
- 3/16" Tubing
- 5/16" Supplies
- 8 oz Plastic Flat Bottle
- Barrel Accessories

**\$0.34**

1 [Add to cart](#)

[Add to Wishlist](#)

SKU: 660300099

Categories: 5/16" Fittings, 5/16"

1200 Drops

✓ 1000 x "36" Pre Cut Clear Droplines" have been added to your cart.

**\$0.74**

100 [Add to cart](#)

[Add to Wishlist](#)

SKU: 6600100036

Categories: Tubing, Tubing & Mainline